

Echos From the "BAT" Cave

Baltimore Area Turners

BALTIMORE AREA



TURNERS

October, 2016
Volume 11, Number 10

TOOL MASTER AND MORE MAWT SYMPOSIUM



Inside this issue:

Doug Thompson	2
MAWTS Part 2	5
Prez Challenge	7
Other Stuff	8

2016 Officers:

President
Ron Ford
Vice President
Stephen Jones
Treasurer
Wayne Kuhn
Secretary / Newsletter
Richard Dietrich
Webmaster
David Maidt
Librarian
Clark Bixler
Public Relations
Stephen Jones
Program Director
Ron Ford
Membership
Stephen Jones



Doug Thompson (*above*), maker of some of the best lathe tools in the world, shared his knowledge and enthusiasm for sharpening with BAT.

Also, more coverage of September's Mid-Atlantic Woodturning Symposium held in Lancaster. Cindy Drozda (*left*) showed how to turn echinoderms into gold.

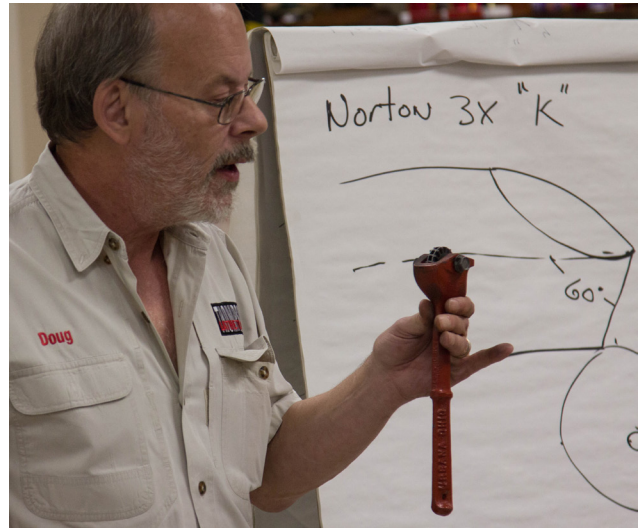
Thanks again to Clark Bixler for contributing to this issue.

MORE INSIDE





(left) Doug shows how to measure grind angle with a combination square



(right) Star dresser for grinding wheel - leaves rough surface for quickly removing metal

TOOLS, GLORIOUS TOOLS

For 36 ½ years, Doug Thompson was a machinery repairman in a Ford plant by day and woodworker in his spare time. His [website](#) tells how he got started in turning and making tools after the price of Jerry Glazer’s legendary tools doubled. He started making tools in his garage, using the same steel used by Glazer. He sold to his turning club members who told their friends and, by word of mouth, his business grew. He made the first 20,000 tools in his garage, sending them out for heat and cryo treatment. After almost eleven years, he still outsources heat and cryo treatment as well as handle anodizing but has moved from the garage to a factory.

He came to BAT in November to talk tools and sharpening. He brought his own grinder, a high speed grinder with Norton 3x ‘K’ grade hardness wheels. He roughs with a 46 grit and touches up with an 80 grit wheel. He explained that he uses the high speed grinder because he sharpens every tool his company makes (over 70,000 so far) and it removes steel the fastest.

He used a Wolverine [Vari-grind](#) to create a basic grind on an unground bowl gouge. He said that all the pros use the basic grind. He recommended setting the leg angle of the Vari-grind as pictured on his [handout](#). The leg angle sets the wing angle of the bowl gouge.

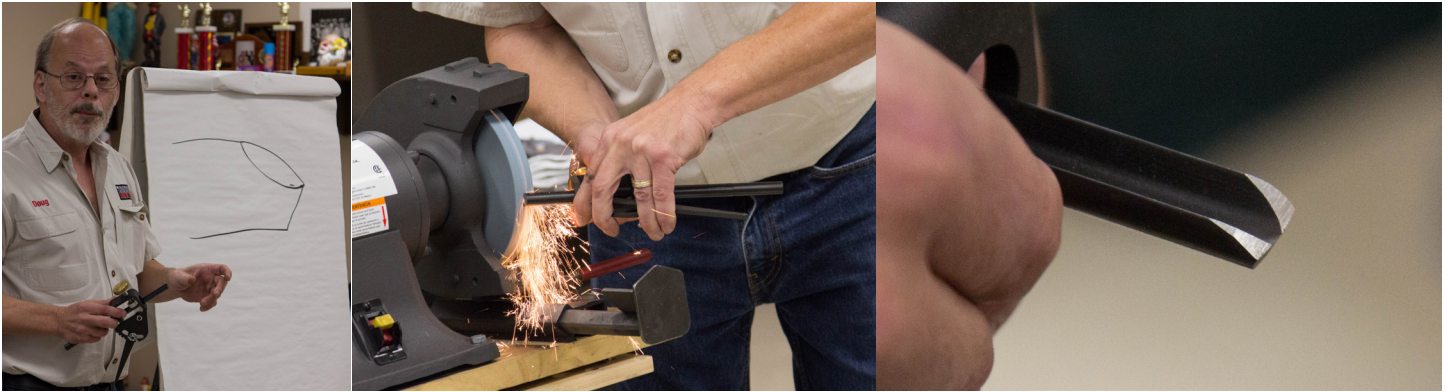
(Continued on Page 3)



Doug explains hollow grind on a skew.



Sharpening a skew on a robo-rest.



Discussing the curve . . . and grinding it

LOOK SHARP. . .

(Continued from Page 2)

The first step in grinding a new gouge was to grind a convex curve on the edges of the gouge. Then he set the grind angle by adjusting the extension of the Wolverine slide. Initially, this is done by trial and error - he showed how to measure the grind angle with a [combination square](#). Finally, he ground the wings creating a parabolic cutting edge. He said that the radius of the gouge tip should match the radius of the flute.

He went on to discuss grinders and wheels. He said sharpening was all about technique rather than just equipment. He then discussed the differences between the various high speed steels and tool steels. Vanadium content differentiates them as more Vanadium imparts better wear resistance. His tools are made of CMP10V, with 10% vanadium which has been heat treated up to 2300°, tempered at 1000°, and Cryo treated to -300°. He said that the black finish on his tools is from the heat treatment.

He showed how to sharpen a skew with a hollow grind. For flat tools, he uses a [Robo Rest](#) which can easily be set for reproducible grinding angles.



Grinding the wings



The Basic Gouge Grind

(More on Page 4)

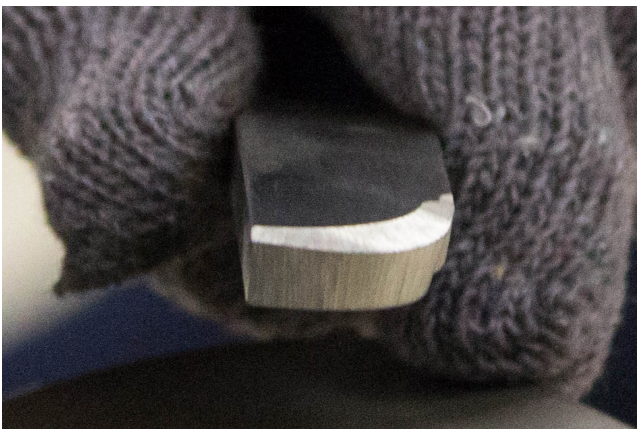
... FEEL SHARP, BE SHARP



Supporting on robo-rest



The ground scraper



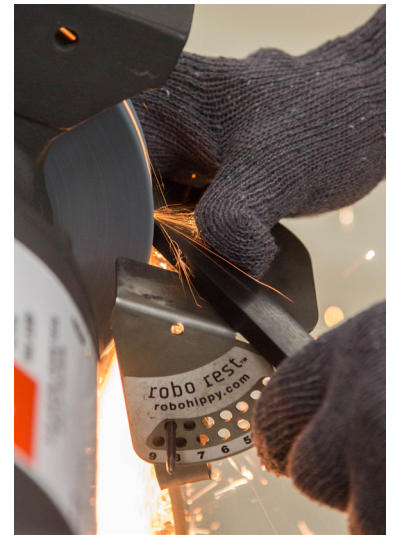
The negative rake scraper

(Continued from Page 3)

He finished up by grinding an unground scraper into a bowl scraper by rounding over the left shoulder. For this process, he wore gloves as, even though he took quick passes on the grinder, the metal became quite hot. He then changed the angle and ground the top to produce a negative rake scraper. He said that a course burr could be created on a scraper with a grinder and a fine burr could be produced by rubbing with a diamond hone in a figure 8 manner.

This was an entertaining and educational demo. Doug took his time in answering our many questions and provided many tips along the way. His tools were for sale after the demo and many BAT members took advantage. He donated the negative rake scraper to BAT.

Great demo, Doug. Thanks a lot !



Nibbling off the corner



Negating the rake



Like kids in a candy shop !

MAWT SYMPOSIUM PART 2

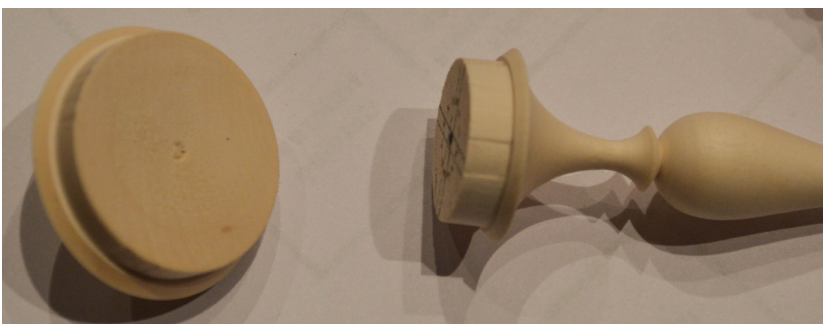
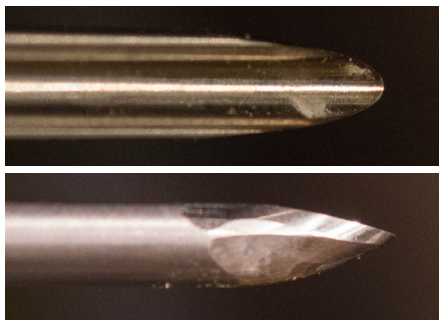
Photos at left and lower corners by Clark Bixler



Cindy Drozda's Ornament Demo

(Counterclockwise from top center)

Gilded Sea Urchin; with and without inserts; finger supports thin finial as it is turned; Cindy's grind - on a Thompson 3/8" deep flute spindle gouge; the top and bottom inserts; Cindy's presentation setup



Note the screen behind Cindy - *(More on Page 6)*

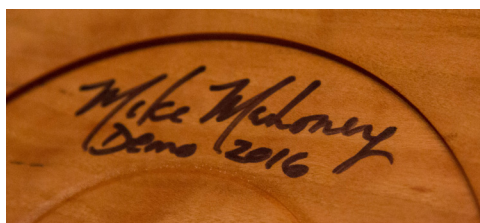


(Clockwise from upper left)

AV was outstanding at MAWTS. Each demonstrator had a cameraman operating an HD camera on a boom; 60" HD screens showed close up details of Mike Mahoney's turning, thread chasing, and hollowing.



Two more MAWTS demonstrators are featured in this issue. Look for more to come in future issues



Mike Mahoney turned a Sycamore disc into a gorgeous platter; grain of wood and details of top and bottom were exquisite.

PRESIDENT'S CHALLENGE



Ken Liester showed a pair of Maple salt and pepper cellars packed to preserve freshness.

		Handle	Apple/Pear	Board Bowl	Whistle	Shakers	Ornament
Chuck	Cohen			x	x		
Richard	Dietrich	x					
Ron	Ford	x	x	x	x		
Greg	Ham	x	x		x		
Louis	Harris	x	x	x	x		
Don	Keefer			x			
Wayne	Kuhn	x					
Steve	Langrall	x					
Ken	Leister	x	x	x	x	x	
Bill	Marr				x		
Bob	Rupp	x		x	x		
David	Smith				x		
Bob	Sobczak	x	x	x			
Charles	Stackhouse	x	x	x			

RAFFLE NEWS



Five MAWTS T-shirts, a spalted Sugar Maple bowl blank, hard Maple and Sassafras spindle blanks, Plum branch cutoffs, assorted pen blanks, Maple bottle stopper blanks, an Osage Orange split and a Cedar log were donated by BAT members to the November raffle. Thanks to all.

BALTIMORE AREA TURNERS

Baltimore Area Turners usually meets every month on the second Wednesday of the month. The next meeting will be held at the Boumi Temple at

5050 King Avenue
Baltimore, MD 21237-3325

Next meeting:
November 9, 2016 at 7:00 PM

Agenda: Don Keefer and Ron Ford: Segmented Turning and Board Election



BOARD ELECTION

It's time for a new Board.

A slate of nominees for Officers and Board members will be offered at the November meeting. It is the result of many months of careful negotiation and coersion.

There is still room for At-Large members. At-Large members attend the once a month Board meetings and offer their wisdom to the group but do not have a specific job, such as Veep or Treasurer. Some of our best ideas have come from At-Large members.

Is the club meeting your needs? Do you have ideas as to how better to spread the Joy of Turning? Consider becoming part of the group that makes it happen.

Speak to any current Board member if you are interested.

PRESIDENT'S CHALLENGE #6

BAT President Ron Ford has announced the sixth President's Challenge for 2016:

December – Turn a Holiday Ornament.

December is the deadline for all entries in the 2016 Iron Man Challenge.

(This is the final entry in the Fourth Susan Shane Memorial Iron Man Challenge.)